



Why Normande

strength & fertility

- **body condition & sturdiness:** Normande's dual-purpose heritage supports excellent health and condition on minimal or no grain
- **fertility:** multiple studies confirm superior fertility compared to other specialized dairy breeds
- **vigorous calves:** easy-to-raise offspring with strong premiums in both U.S. and European markets
- **docility:** Normande cows and bulls are renowned for their exceptional temperament
- **reliable genetics:** nearly 200,000 cows on test, with new bulls evaluated annually using the most advanced genomic techniques

added value

- **exceptional components:** 4.3% fat and 3.67% protein—the result of centuries of selection for premium butter and cheese
- **cheesemaking quality:** high protein percentage, medium-sized fat micelles, elevated calcium, and a high prevalence of *BB Kappa Casein* (which can yield up to 10% more cheese than *AA Kappa Casein*)
- **A2A2:** one of the highest A2A2 percentages of any dairy breed
- **beef quality:** unique marbling and early-maturing qualities make Normande-sired steers and cull cows finished on grass among France's most sought-after beef
- **branding power:** Normande milk is the heritage source of Camembert and other world-renowned cheeses, rich cream, butter, and marbled beef—a compelling story for marketing added-value products

About Normande Genetics

Founded in 1997 and independently owned, Normande Genetics is dedicated to strengthening North American dairies through the introduction of the Normande breed. We believe today's ultra-specialized U.S. dairy breeds suffer from functional fatigue—marked by declining fertility and longevity in both intensive and grass-based systems. The Normande cow, by contrast, has retained its naturally balanced traits: muscularity, body condition, fertility, and low-grain adaptability—making it an ideal partner for any crossbreeding program.

Beyond herd health, Normande stands apart for its remarkable added value: exceptionally high components, unique cheese and beef qualities, and outstanding docility. Research in both France and the U.S. confirms that Normande × Holstein crosses outperform their parent breeds, delivering higher lifetime profitability than Holstein purebreds.



Normande proof and price list – production and

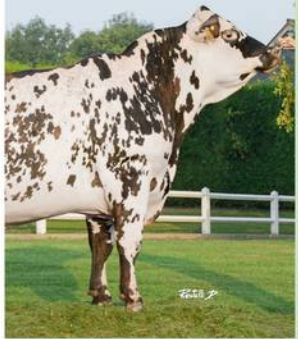
	production									frame					muscle				feet & legs												
	reliability	daughters	ISU (Normande TPI)	protein lbs	fat lbs	protein + fat (lbs)	protein %	fat %	milk	stature	body width	body depth	width at pins	rump angle	back line	feed efficiency	muscularity	cull cow value	beef value composite	rear legs side view	bone quality	foot angle	rear legs rear view	locomotion	feet & legs composite	digital dermatitis (hairy warts)	corns (interdigital hyperplasia)	sole ulcer	infectious lesions composite	mechanical lesions composite	foot health composite
Lamier	95	451	105	-4	33	29	0.00	0.30	-117	-1.4	-1.2	-1.4	-1.4	1.0	-0.3	-1.2	-0.5	-0.9	-1.3	0.2	1.8	-0.7	0.7	0.3	0.3	0.9	0.9	-0.5	0.8	-0.3	0.4
Landel	95	747	111	20	44	64	-0.17	-0.09	1340	-0.9	-0.9	-0.9	-1.2	-0.6	-0.7	-1.0	-1.0	-0.6	-0.6	-0.1	0.5	-0.6	0.0	0.2	-0.1	0.6	-0.1	1.5	0.4	1.2	0.7
Licorice	95	1651	110	40	33	73	0.24	0.18	299	-0.3	-0.2	0.0	-0.9	0.4	1.0	0.2	-0.5	-0.9	-1.3	1.4	-0.7	0.9	1.1	1.8	1.3	0.1	0.6	-0.5	0.2	-0.2	0.0
Maanonu	95	830	117	75	86	161	0.03	-0.04	2094	-0.5	-0.4	0.1	-0.8	-1.1	-0.2	0.7	-1.3	-1.4	-1.4	-1.0	0.1	0.2	0.7	0.0	0.0	-0.6	-1.1	-0.3	-0.7	-0.4	-0.6
Nestar	95	1001	151	106	136	242	0.01	0.01	3139	-0.8	-0.5	-0.1	-0.6	-0.6	-0.1	2.2	-0.4	-0.1	1.0	-0.3	0.8	-0.1	-0.2	0.5	0.1	0.3	0.8	0.0	0.5	0.3	0.4
Nintendo	95	785	103	46	26	73	0.09	-0.14	1080	0.7	-0.2	0.1	0.0	-0.7	-0.5	0.0	-0.6	0.2	-0.5	0.4	0.6	-1.1	0.5	-0.1	-0.1	0.5	0.7	1.1	0.5	0.2	0.4
Niville	95	413	127	31	68	99	-0.05	0.14	1122	-0.1	0.5	0.3	1.1	-1.5	-0.1	0.2	-0.1	-0.4	0.7	0.3	0.2	-1.0	-0.1	0.6	-0.2	0.4	-0.6	0.9	0.2	0.7	0.4
Ocasse	95	605	138	13	103	117	0.05	0.72	251	0.0	0.6	0.4	-1.0	1.8	1.4	1.0	1.3	0.7	1.3	0.1	-0.5	1.3	-0.8	0.7	0.4	-0.4	-0.2	0.6	-0.3	0.2	-0.1
Olympe	95	364	113	29	55	84	0.37	0.60	-403	-0.6	-0.6	-0.7	-0.1	-0.4	1.1	0.6	-0.1	0.4	0.6	1.4	0.5	0.9	0.6	1.9	1.4	1.1	0.5	1.1	0.9	0.8	0.9
Oroi	95	1443	130	57	101	158	-0.11	0.06	2145	-0.7	0.8	0.1	0.6	0.2	0.7	1.3	0.9	-0.7	0.9	0.0	0.3	1.0	1.1	1.3	1.0	1.7	1.2	-1.3	1.5	-0.6	0.7
Paluel	95	1235	143	26	18	44	0.04	-0.08	704	-0.5	0.3	-0.4	-0.6	2.3	1.0	-0.2	0.7	0.3	0.5	0.6	-0.2	0.7	0.6	0.7	0.7	-1.2	-1.1	1.0	-1.0	1.2	-0.1
Pilier	95	1252	146	64	106	169	0.12	0.28	1544	0.3	-1.0	0.4	0.1	-1.4	0.4	1.1	-1.2	0.6	-0.7	0.5	1.8	1.9	0.5	1.4	1.5	1.3	1.6	0.0	1.3	0.1	0.8
Portsall	94	162	132	88	64	152	0.18	-0.15	1925	0.9	-0.9	0.1	-0.3	0.1	-0.3	0.9	-1.5	-0.6	-0.9	0.3	1.6	1.0	0.4	0.6	0.9	1.5	1.7	2.0	1.4	0.8	1.2
Reflexion	74		135	70	106	176	0.21	0.33	1368	-1.1	0.6	-0.7	-0.7	0.3	-0.3	1.7	0.4	0.3	0.2	0.1	0.2	1.8	1.5	1.9	1.6	1.1	1.5	0.4	1.1	-0.2	0.6
Riddick	82	25	137	26	73	99	0.00	0.25	917	0.0	-0.7	-0.2	0.1	0.1	-1.8	-0.2	-1.4	-1.2	-1.2	1.5	1.9	0.7	2.1	2.2	2.0	-0.1	0.3	-0.1	0.1	0.1	0.1
Seagal*	77	10	126	42	53	95	0.03	0.01	1140	0.3	0.4	0.1	0.1	-0.4	0.1	0.4	0.4	0.6	1.0	-0.8	-0.6	-1.7	-0.1	-0.8	-1.1	-0.4	-0.2	0.0	-0.3	-0.2	-0.3
Taroyal	75		147	62	81	143	-0.03	-0.07	2035	0.0	-0.2	0.3	0.4	-0.1	1.2	0.7	-0.7	0.1	0.4	-0.2	-0.1	0.4	0.0	-0.1	0.1	-1.5	-0.9	0.8	-1.2	1.0	-0.3
Texas*	75		139	51	46	97	0.01	-0.19	1602	0.1	-0.7	-0.3	0.5	-0.6	1.2	0.2	-0.3	0.3	-0.5	0.7	1.4	1.7	1.2	2.2	1.9	-0.2	0.5	-0.4	0.0	-0.4	-0.2
Tinorossi*	75		145	68	99	167	0.20	0.36	1390	-0.8	0.9	0.8	-1.3	-0.4	0.8	2.0	0.6	-1.4	-0.5	0.3	0.4	-0.8	0.4	1.7	0.4	1.1	1.0	0.2	1.0	0.2	0.7
Treasure*	74		156	84	123	207	0.29	0.43	1586	-1.2	0.0	-0.1	0.0	-0.6	1.7	2.4	0.2	-0.5	-0.2	0.8	0.2	1.6	0.2	1.0	1.1	0.1	0.3	-0.4	0.2	-0.6	-0.1
Twist	74		160	55	53	108	0.26	0.18	876	0.7	1.0	0.6	0.3	-0.1	0.2	1.7	1.3	0.4	0.8	0.5	0.7	-0.3	-0.1	1.1	0.4	0.3	0.4	0.2	0.3	-0.1	0.1
Tzess*	74		152	51	90	141	0.07	0.33	1201	-0.3	0.1	0.2	-0.4	1.5	0.8	1.0	0.0	0.3	0.0	0.5	1.6	0.1	0.6	0.9	0.7	-0.4	-0.6	0.5	-0.4	0.7	0.0

*sexed semen available for \$58

To place an order, call 612-823-7212 • 612-710-7363 (cell) | info@no



daughter of Paluel



Tinorossi

Understanding our proofs

ISU (French normande TPI) = 26% production (12% fat + 14% protein) + 21.25% type (4.5% muscularity + 3% frame + 6.5% feet & legs + 7.25% udder) + 12.5% veal & steer value + 16% udder health (9.5% SCC + 6.5% mastitis) + 13.5% fertility + 6% longevity + 4.75% milk speed

beef value composite: 15% frame + 22.5% muscularity + 11.25% veal growth + 10% veal conformation + 2.25% veal color + 11.25% steer growth + 27.5% steer conformation

feet & legs composite: 20% rear legs rear view + 10% bone quality + 30% foot angle + 20% rear legs side view + 20% locomotion

Trait interpretation notes:

- **calving ease:** 0 = average; higher positive values indicate greater ease
- **the following traits are optimum at 0**—positive values indicate: rump angle (+ = sloped), back line (+ = curved up), rear legs side view (+ = posty), rear legs rear view (+ = straight), foot angle (+ = steep), udder balance (+ = high rear quarters), teat direction (+ = internal), teat length (+ = long), rear teat placement (+ = outward).
- **functional traits:** positive values are desirable.

How to order: Call **612-823-7212** (or cell: **612-710-7363**) or email **info@normandegenetics.com**.

Orders ship from Wisconsin in dry shippers via Spee-Dee or FedEx Ground. Shipping and insurance are not included. Straws are ¼ cc. Minimum order: \$400–\$800 depending on season. All prices subject to change without notice. Sexed semen available for select bulls marked * at \$58.

aAa® numbers

Lamier.....531426	Pilier342156
Landel345216	Portsall435261
Licorice.....453216	Riddick.....345216
Maanonu 456312	Taroyal423516
Nestar354126	Texas.....351426
Niville.....531462	Tinorossi...516342
Ocasse.....432561	Treasure...531462
Olympe.....342561	Twist.....153624
Oroi435261	Tzess516324
Paluel534126	

semen fertility ranking

- +++ Licorice, Olympe, Oroï, Paluel, Pilier, Portsall, Reflexion, Riddick, Treasure, Twist
- ++ Landel, Niville
- + Lamier, Maanonu, Nestar, Nintendo, Ocasse, Seagal, Taroyal, Texas, Tinorossi, Tzess



Bulls marked with this logo carry verified resistance to paratuberculosis

and type breeding values – april 2026

udder										functionals & health										pedigree			price				
fore udder attachment	udder balance	udder depth	rear attachment	teat direction	front teat placement	ligament	rear teat placement	teat length	udder composite	milk speed	temperament	somatic cell count	clinical mastitis	udder health composite	longevity	fertility cows	fertility heifers	calving-1st AI interval	fertility composite	ketosis resistance	calving ease	kappa casein	beta casein	sire	maternal grand sire	NAAB code	price
0.5	1.6	0.0	0.0	0.0	-0.1	0.1	-0.5	0.5	0.4	0.7	0.7	0.5	0.3	0.5	0.4	0.4	-0.4	-0.3	0.0	-0.5	2.2	AB	A2A2	Holen Hoz	Fambrien	183N046	\$20
1.1	0.5	0.2	0.4	0.3	0.1	-0.2	0.6	1.2	0.3	0.0	-1.0	0.4	-1.5	-0.4	0.7	1.6	1.0	-1.5	1.2	-1.5	1.5	AB	A2A2	Handelles	Bouclier	183N045	\$20
0.5	1.1	-0.6	1.3	0.7	0.1	0.8	0.5	-0.5	0.5	-0.6	-0.4	-0.3	0.2	-0.1	-0.2	0.2	1.2	-0.1	0.6	1.2	1.3	BB	A2A2	Iroquois	Atome	183N043	\$23
1.2	0.9	0.2	0.6	1.6	1.9	1.5	2.2	0.3	1.3	0.7	-0.5	-0.5	1.2	0.2	-0.8	-1.0	0.4	-0.5	-0.7	-0.1	1.4	AB	A2A2	Fortain	Folden	183N053	\$23
0.1	0.2	-0.9	0.4	-0.4	-1.1	0.3	-0.4	0.2	-0.3	-0.7	-0.2	2.0	0.9	1.7	0.3	0.0	0.2	-2.0	-0.4	-0.8	1.0	AB	A2A2	Jesse	Unnoel	183N058	\$24
0.5	0.5	0.5	2.5	0.5	1.0	0.3	0.4	-0.6	0.8	0.5	0.1	0.1	-0.5	-0.2	-0.4	-0.7	-0.8	-1.0	-1.1	-0.9	1.0	BB	A2A2	Jobyjoba	Holen Noz	183N056	\$23
0.3	0.0	-0.4	1.3	0.1	0.2	0.6	0.4	1.0	0.2	0.7	-0.4	0.7	-1.1	0.0	0.5	1.0	0.3	0.3	0.9	-0.1	1.1	BB	A2A2	Landel	Atome	183N057	\$21
0.7	-0.1	0.0	-0.5	0.0	0.1	0.1	0.0	-0.2	0.1	-0.1	-0.1	0.9	0.7	0.9	0.2	0.7	0.3	0.8	0.8	0.4	1.2	AB	A2A2	Lepanto	General	183N061	\$23
0.6	1.2	-0.3	-0.5	0.2	-0.1	-0.6	-1.3	1.4	0.1	0.6	-0.5	-0.6	-0.9	-0.8	-0.4	-0.4	-1.0	1.1	-0.4	-1.4	1.7	BB	A2A2	Maneville	Fornells	183N059	\$22
0.2	-0.1	0.6	0.2	0.7	-0.1	1.1	1.1	-2.5	0.5	1.1	-1.1	0.1	0.0	0.1	0.3	-1.5	-1.4	0.5	-1.5	-1.4	0.7	BB	A2A2	Fuseos Isy	Ibernatus	183N063	\$24
0.4	0.2	0.6	0.2	0.0	-0.8	1.0	1.1	-1.3	0.4	-0.4	0.1	1.0	1.2	1.2	1.9	2.3	0.7	0.7	2.1	-0.2	1.3	BB	A2A2	Milko	Himpala	183N075	\$25
0.1	1.0	-0.3	-0.2	0.7	1.6	0.8	0.7	1.7	0.7	0.2	0.2	1.1	0.4	0.9	0.3	1.1	1.1	0.4	1.3	-0.3	1.0	AB	A2A2	Marvel	Bainville	183N068	\$26
0.3	0.2	1.0	2.2	0.9	0.8	1.0	0.6	-2.3	1.0	0.7	0.8	1.0	0.3	0.8	0.1	-0.2	-0.4	-0.8	-0.5	-0.1	1.5	BB	A2A2	Nintendo	Jolfover	183N069	\$24
1.7	0.6	0.3	0.5	0.2	0.5	-0.4	0.3	-1.7	0.5	-0.4	-1.0	0.6	0.3	0.5	-0.6	-0.8	0.6	0.7	-0.2	-0.4	0.7	BB	A2A2	Ghypsy	Jolfover	183N074	\$24
0.2	0.9	-0.8	1.4	1.0	1.1	0.7	0.8	-0.3	0.5	-0.4	-0.7	1.2	0.3	0.9	1.0	1.8	0.8	1.2	1.9	0.2	1.3	BB	A2A2	Nagua	Honfleur	183N071	\$25
0.0	0.0	0.8	0.7	0.4	0.2	0.4	0.9	-0.4	0.4	0.8	0.6	0.9	0.5	0.8	0.0	-0.1	-0.2	0.1	-0.1	-0.1	0.8	BB	A2A2	Orfevre	Labyrinthe	183N073	\$26
1.7	1.4	0.4	1.4	0.9	0.1	1.1	0.5	-0.6	1.1	-0.2	0.2	1.9	0.5	1.5	1.2	0.6	0.3	-1.1	0.4	-0.2	1.0	AB	A2A2	Paluel	Jesse	183N079	\$26
1.6	0.2	0.0	-0.2	0.7	1.2	0.8	0.9	0.5	0.7	0.7	-0.4	0.9	1.0	1.0	0.6	0.1	1.1	0.7	0.7	0.6	1.1	BB	A2A2	Glass	Montoya	183N081	\$26
1.2	1.5	-1.0	0.1	0.5	0.2	0.6	0.4	-0.3	0.4	-0.1	-1.3	0.7	1.2	1.0	1.7	1.6	1.4	-0.8	1.3	0.9	0.9	AB	A2A2	Opium	Jibraltar	183N076	\$25
0.9	1.6	0.5	0.7	0.9	0.1	2.1	1.8	-1.8	1.3	-0.8	-1.3	1.1	0.8	1.1	0.9	1.0	1.2	0.3	1.2	0.5	2.0	AB	A2A2	Rebel	Marvel	183N078	\$26
-0.1	0.4	1.1	-0.4	-0.2	0.4	0.9	-0.2	-0.2	0.7	-0.1	0.5	2.2	1.8	2.3	1.8	1.6	0.2	1.1	1.4	0.7	1.3	BB	A2A2	Password	Loumis	183N077	\$26
0.5	1.0	0.3	1.3	0.3	-0.1	1.8	1.4	-0.2	0.9	-0.1	-0.6	1.0	1.3	1.2	1.7	1.5	0.9	0.7	1.7	0.2	0.5	BB	A2A2	Paluel	Marvel	183N080	\$26